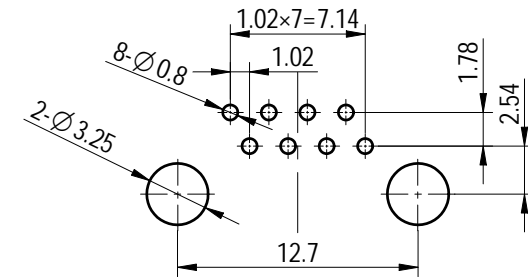


NOTES:

1. Electrical characteristics:
  - 1.1 Contact resistance: 50mΩ Max. Initial.
  - 1.2 Dielectric withstanding voltage: 500V AC(rms) for 1 minute.
  - 1.3 Insulation resistance: 1000MΩ Min.
  - 1.4 Rated current: 1.5A.
2. Environment characteristics:
  - 2.1. Temperature range: -40°C~+85°C.
3. Materials:
  - 3.1 Terminal: Phosphorized copper Gold plating on nickel substrate≥1u.
  - 3.2 Rubber core: PBT, black, fire-retardant.
4. Products meet the latest RoHS environment requirements.



PCB LAYOUT

Transfer or duplication of this document as well as the utilization or communication of its contents are prohibited unless explicit authorization is granted. Violations will be liable for compensation. All rights reserved for patent, utility model or design registrations. 除专利号明确标注外, 其他内容均受法律保护。未经授权, 复制或传播, 均须承担法律责任。本公司保留对内容变更的所有权利。

GENERAL TOLERANCE			MATERIAL:	SURFACE/COLOR:
X.	±0.60		MAT NO./REV:	/ 00
X	±0.38	APPD: 兰春华	2023.08.14	
.XX	±0.25	CHKD: 陈招	2023.08.14	
		DRFT: 唐本恒	2023.08.14	
		NAME DG1128-11-S8B8P-3A		
00		唐本恒	2023.08.14	唐本恒
REV	ECN	DESCRIPTION	DRFT	DATE
				A4
			DRAWING NO.	TYPE
			200035075	CUSTOMER DRAWING
			DRAWING STATUS	SCALE
			已发布	2:1
			SHEET	1/1